



MONTHLY MEMBERSHIP PROGRESS REPORT

Results as of: 1/31/2016

Multiple District 27

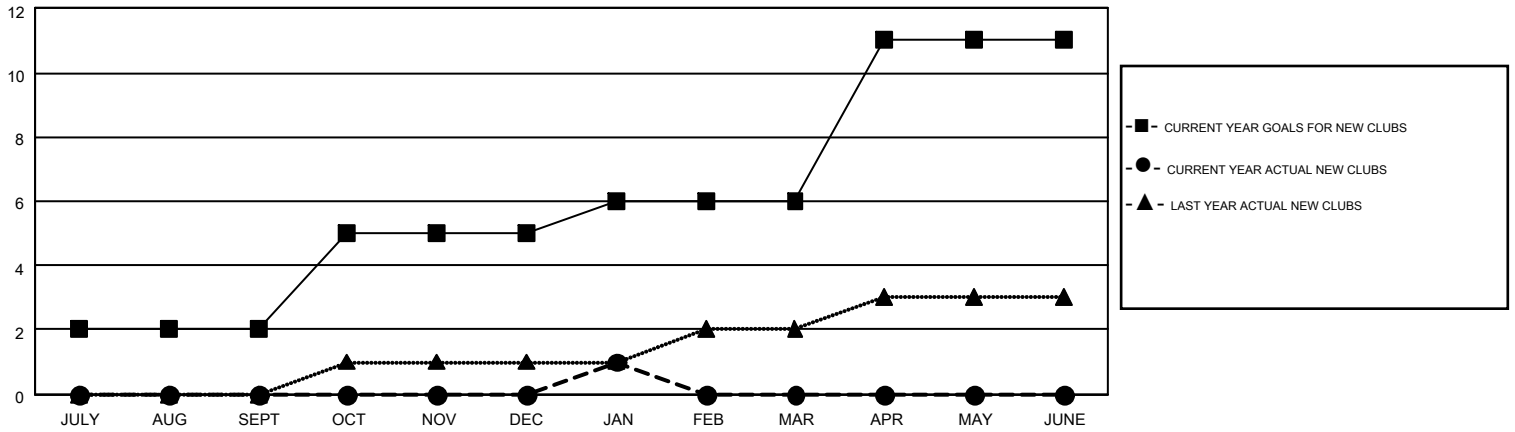
LOCATION: WISCONSIN

GMT: JUDY HANKOM

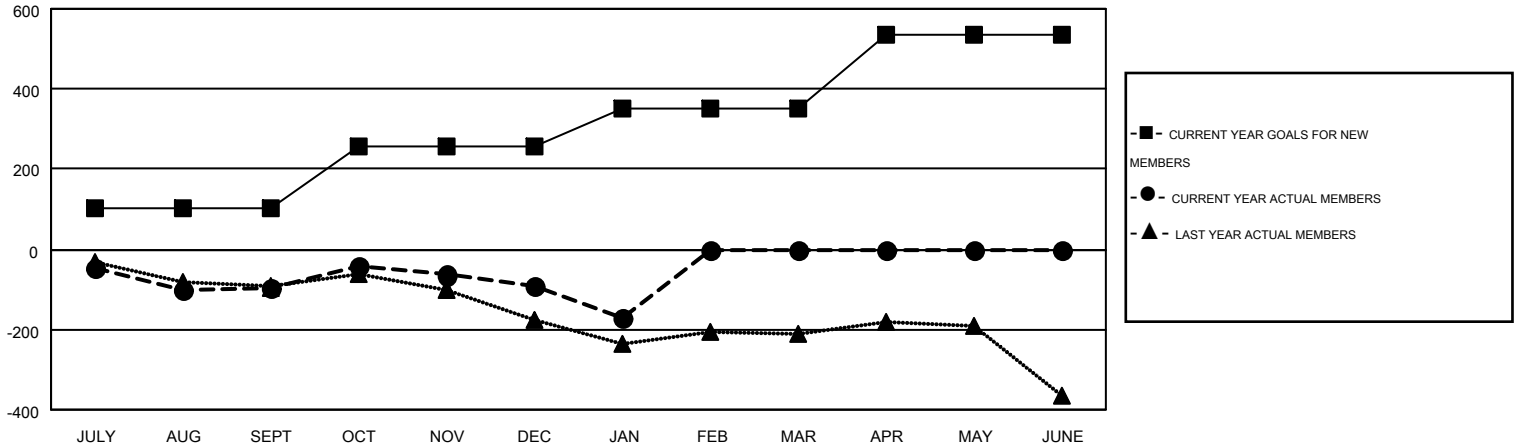
GMT CA 1

Clubs					Members				
RESULTS FOR 2015-2016					RESULTS FOR 2015-2016				
QUARTER	NEW CLUB GOAL	NEW CLUBS	DROPPED CLUBS	NET GAIN/LOSS	QUARTER	NEW MEMBER GOAL	CHARTER AND NEW MEMBERS ADDED	DROPPED MEMBERS	NET GAIN/LOSS
JULY/AUG/SEPT	2	0	1	-1	JULY/AUG/SEPT	103	331	429	-98
OCT/NOV/DEC	3	0	1	-1	OCT/NOV/DEC	155	415	408	7
JAN/FEB/MAR	1	1	0	1	JAN/FEB/MAR	93	160	238	-78
APR/MAY/JUNE	5	0	0	0	APR/MAY/JUNE	184	0	0	0

GOALS AND ACTUAL NEW CLUBS CUMULATIVE



GOALS AND ACTUAL MEMBERS CUMULATIVE



DROPPED CLUBS: 2	303 CLUBS OF 536 ADDED 1 OR MORE NEW MEMBERS	<u>GENDER DISTRIBUTION</u>	
<u>DROPPED MEMBERS</u>		MALE	14,369 (79.25%)
DECEASED	138	FEMALE	3,762 (20.75%)
CLUB CANCELLED	11	CLICK HERE FOR HEALTH ASSESSMENT DATA	
OTHER	926	FAMILY UNIT MEMBERS	3,203
TOTAL	1,075	HEAD OF HOUSEHOLD	1,573
		NON-HEAD OF HOUSEHOLD	1,630